

# AUTUMN TERM

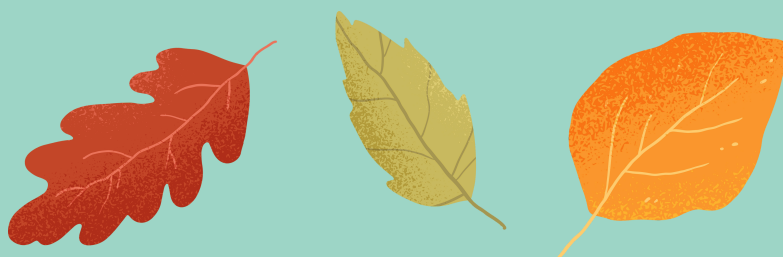


Join our team for a range of activities and groups through the autumn.

**Running from September 8<sup>th</sup>.**

**Sign up now by scanning the QR code**

Or get in touch by emailing  
[barnet@resourcesforautism.org.uk](mailto:barnet@resourcesforautism.org.uk)



## Outings Group

Join in a variety of fun, autism-friendly activities, connect with the community, and make new friends with peers.

**For ages 13-18 years**

**Fridays (Fortnightly) 5pm - 7pm**



## Lego Club

Build communication skills and peer relationships through Lego! Take part in autism and sensory friendly building activities.

**For ages 8+**

**Wednesdays 4:30pm - 5:30pm**



## Family Film Night

Join us in the hub's very own cinema room for a film - fun for the whole family! Our sensory room and quiet spaces will also be available to use.

**For all ages (with a parent or carer)**

**Thursday 2<sup>nd</sup> October 6pm - 8:30pm**



## Stay & Play

Meet with our expert team with your child or young person to take part in activities and receive support. Stay & Play is an opportunity to ask questions, seek guidance, and build resilience.

**For ages 0-8 years (with a parent or carer)**

**Fridays 12pm - 1pm**



Caring for people, our places and the planet

# Parent Social

Join a community of parents and carers for a relaxing and fun evening. Ask our team your questions, take part in activities, and spend some time in a child-free environment.

**For all parents and carers**

**Thursday 18<sup>nd</sup> September 6pm - 8:pm**

**Thursday 16<sup>th</sup> October 6pm - 8pm**



# Autism Drop Ins

Ask your questions and seek support with a member of our team.

**For family members and carers**

**Slots available throughout the week - scan the QR code to book your time**



Caring for people, our places and the planet

resources for  
**autism**



**BELS**  
Barnet Education  
& Learning Service



**NHS**  
Whittington Health  
NHS Trust

**BARNET**  
LONDON BOROUGH